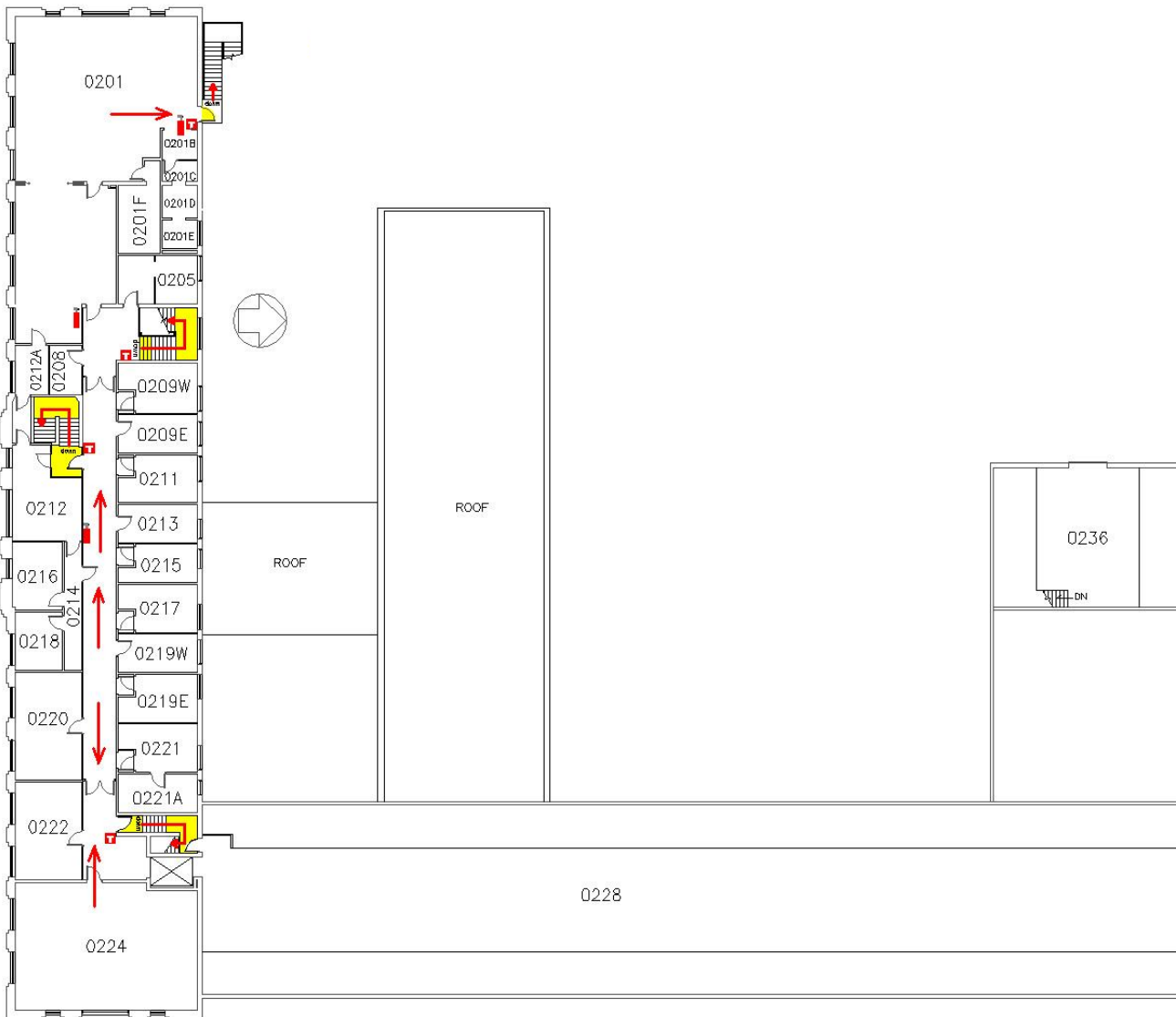


Industrial Education II Second Floor Emergency Map



Evacuation Guidelines

- In case of fire or other emergency requiring evacuation, activate the nearest fire alarm pull station.
- Exit in a calm and orderly fashion. Once you have evacuated to a safe location, immediately call 911.
- Assist injured personnel, if time permits, and make sure all doors are closed and hazardous work operations are shut down as you exit the building.
- Help any physically impaired individuals in need of assistance.

Meeting Place: In the event of evacuation, please proceed to the south side of Insectary.

Safety Guidelines

- Familiarize yourself with the location of exits, alarm pull stations, and fire extinguishers.
- Attempt to control a fire yourself with a fire extinguisher only when the fire is small and you have been trained.
- Keep fire doors closed to prevent the spread of smoke and fire and windows.
- In case of fire, those exiting into the courtyard should exit the courtyard at the north end.

Key

Exits



Fire Alarm Pull Station



Exit Direction



Fire Extinguisher



Severe Weather

In the event of severe weather, proceed to an interior office or hallway in the basement. Keep away from doors.