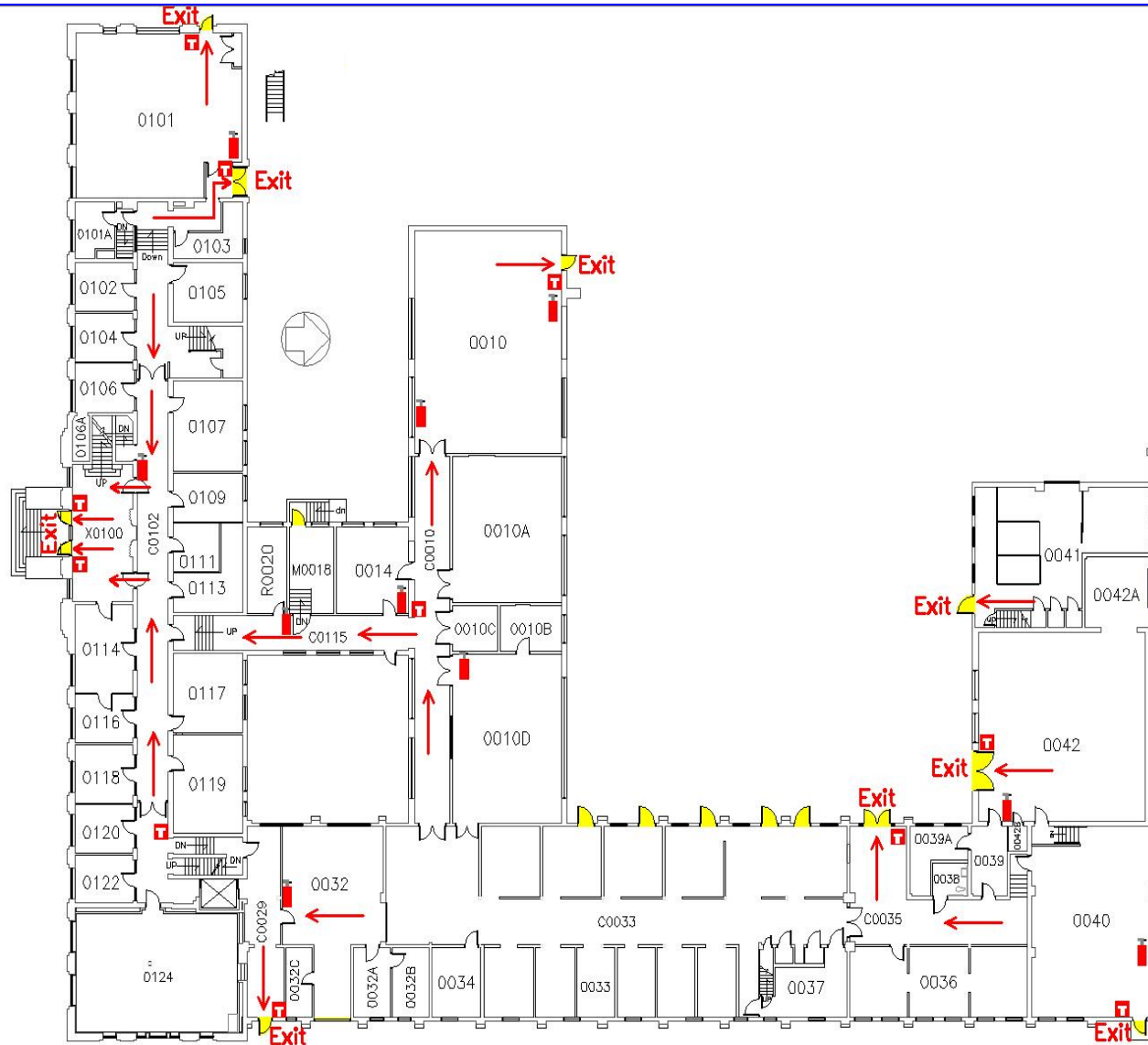


# Industrial Education II First Floor Emergency Map



## Evacuation Guidelines

- In case of fire or other emergency requiring evacuation, activate the nearest fire alarm pull station.
- Exit in a calm and orderly fashion. Once you have evacuated to a safe location, immediately call 911.
- Assist injured personnel, if time permits, and make sure all doors are closed and hazardous work operations are shut down as you exit the building.
- Help any physically impaired individuals in need of assistance.

**Meeting Place:** In the event of evacuation, please proceed to the south side of Insectary.

## Safety Guidelines

- Familiarize yourself with the location of exits, alarm pull stations, and fire extinguishers.
- Attempt to control a fire yourself with a fire extinguisher only when the fire is small and you have been trained.
- Keep fire doors closed to prevent the spread of smoke and fire and windows.
- In case of fire, those exiting into the courtyard should exit the courtyard at the north end.

## Key

Exits



Fire Alarm Pull Station



Exit Direction



Fire Extinguisher



## Severe Weather

In the event of severe weather, proceed to an interior office or hallway in the basement. Keep away from doors.