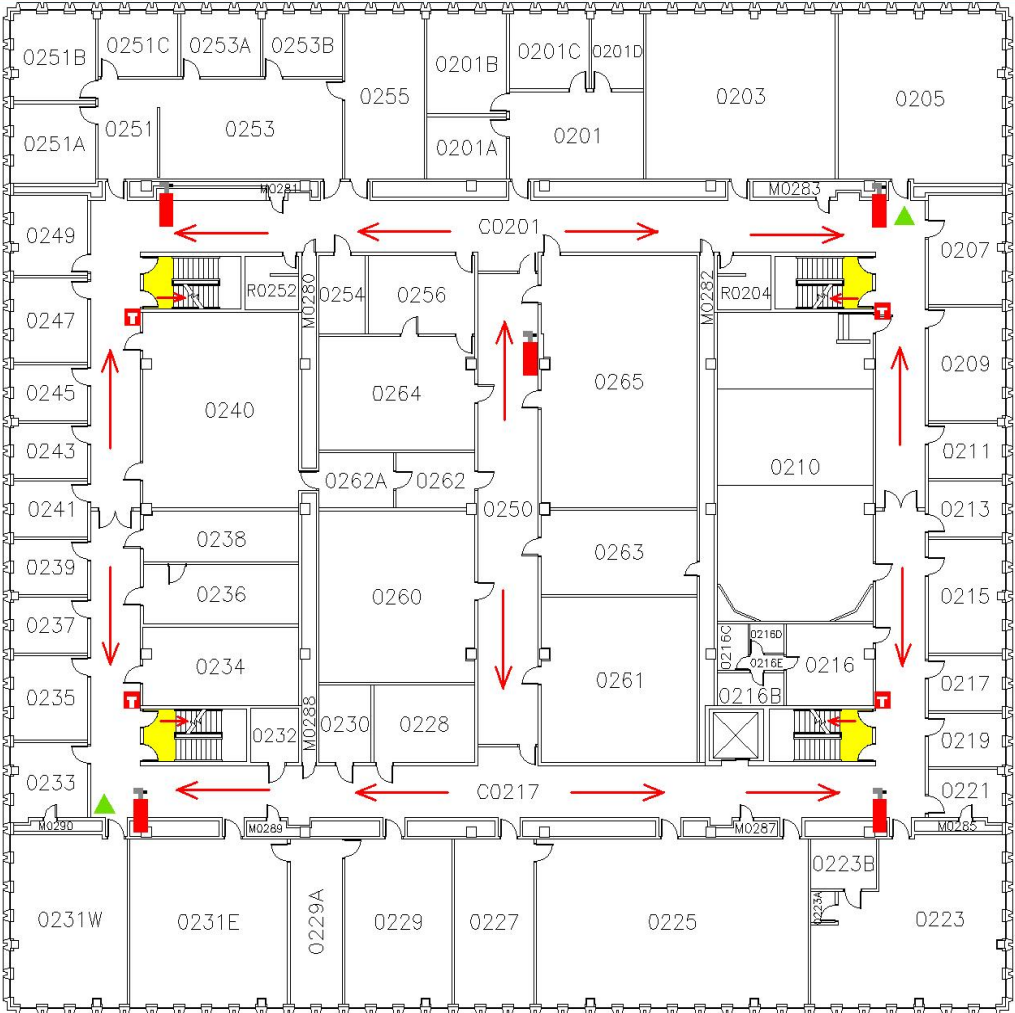


Bessey Hall Second Floor Emergency Map



Key

- Fire Alarm Pull Station
- AED/Defibrillator on 1st floor – north corridor
- Fire Extinguisher
- Exits
- Exit Direction
- Safety Shower

Severe Weather

In the event of severe weather, proceed to an interior office or classroom on the first floor or the basement hallways. Keep away from doors, windows and first floor corridors.

Meeting Place: In case of evacuation, meet at the east entrance to Palmer Hall



Evacuation Guidelines

- In case of fire or other emergency requiring evacuation, activate the nearest fire alarm pull station.
- Exit in a calm and orderly fashion. Once you have evacuated to a safe location, immediately call 911.
- Assist injured personnel, if time permits, and make sure all doors are closed and hazardous work operations are shut down as you exit the building.
- Help any physically impaired individuals in need of assistance.

Safety Guidelines

- Familiarize yourself with the location of exits, alarm pull stations, and fire extinguishers.
- Attempt to control a fire yourself with a fire extinguisher only when the fire is small and you have been trained.
- Keep fire doors closed to prevent the spread of smoke and fire.